



OFFSHORE CONSTRUCTION MANAGEMENT

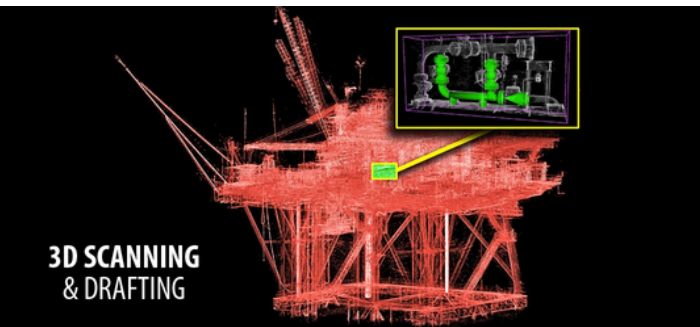
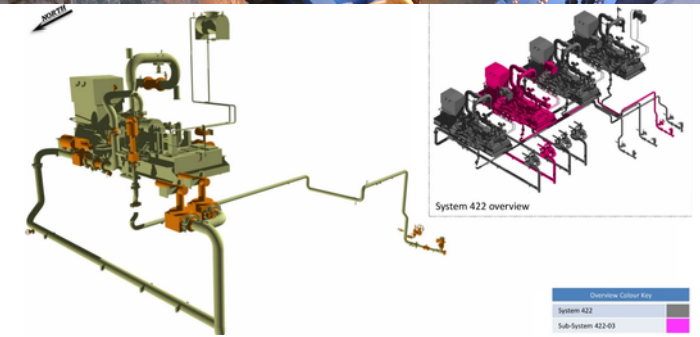
FLEXIBLE. SCALABLE. VERSATILE.

The GIS Construction Management team offers clients a single point of contact to utilize our 20+ strategically located facilities, ~3,200 employees, and 20+ service lines. Serving upstream, midstream, and downstream markets, we align our services with operations from the pre-commissioning phases, through the construction and commissioning, to the ultimate decommissioning phases. GIS's Construction Management service line offers comprehensive planning and development of execution work packs to reduce downtime and preventable delays on offshore and onshore capital and turnaround projects.



SERVICES

- ▶ Project Management
 - Project Oversight
 - Client Management
 - Personnel Management
 - Coordination of Services
- ▶ Project Controls
 - Detailed Cost Estimate Development
 - Cost Management
 - Scheduling
 - Document Control
- ▶ Planning
 - Feasibility/Constructability Reviews
 - Field Inspections
 - Work Pack Development
 - Determine Required Resources (materials, tools, equipment, labor, etc.)
 - Project Plans (SIMOPS, Deck Layout, Flushing, Rigging, Hydro, LOTO)
- ▶ Drafting
 - Laser Scanning/Dimensional
 - 3D Modeling
 - Drawing Development
 - Drawing Verification
- ▶ Fabrication Support
 - Material Planning
 - Fabrication Coordination
 - QA/QC
- ▶ Materials
 - Procurement/Buying
 - Expediting
- ▶ Construction Support
 - Material Planning
 - Construction Support
 - Progress Tracking
 - Logistics
 - Welding Coordination
 - QA/QC



3D SCANNING & DRAFTING



ENERGY • INDUSTRIAL • INFRASTRUCTURE • POWER

WWW.GISY.COM

ABOUT US

Established in 1948, GIS is a 75+ year-old full-service design, fabrication, and construction contractor that is centered on the people that make up the organization. GIS offers clients a single point of contact to utilize our 20+ strategically located facilities, 3,500+ employees, and 20+ service lines. Serving Energy, Industrial, Infrastructure, and Power markets, we align our services with operations from the conceptual stage through construction, commissioning, and asset maintenance.

For more information on our company, you can visit www.gisy.com.

SAFETY

LIFE is the proactive, operational, and behavior-based component of GIS's comprehensive safety management program. While our Corporate HSE group focuses on compliance, training, and incident response, the LIFE processes specifically cover Operational Safety, through: comprehensive work planning; increasing awareness of work area & task risks; intervention techniques for redirecting at-risk behaviors; embedded field presence; quarterly initiatives focused on observed areas of risk; and visible leadership engagement all while encompassing the Human Performance Improvement Principles.

PEOPLE

GIS employees are at the heart of our business. We are committed to developing and sustaining long-standing relationships with both our internal and external clients. Each employee is committed to excellence and continuous improvement. We understand the personal component of our business and are built upon core values that drive a partnership-minded approach to providing valued solutions to our clients while understanding our clients' operations, goals, and bottom line drivers. Our people believe greater value is created by aligning our goals with those of our clients and striving for innovation and excellence with every opportunity.



PUTTING PEOPLE FIRST

SINCE 1948

CORPORATE HEADQUARTERS

18838 HWY 3235 | GALLIANO, LA 70354

CONTACT INFORMATION

Adam Toups | VP of Construction Management

504.364.4779 | atoups@gisy.com

OFFICE LOCATIONS

LOUISIANA:

Abbeville | Baton Rouge | Broussard | Brusly | Cut Off | Fourchon
Franklinton | Galliano | Houma | Lafitte | Lake Charles | Larose
Metairie | New Roads | Thibodaux | Youngsville

TEXAS:

Baird | Houston | Odessa

INTERNATIONAL:

Makati, Philippines | Rio de Janeiro, Brazil



985.475.5238

proposals@gisy.com